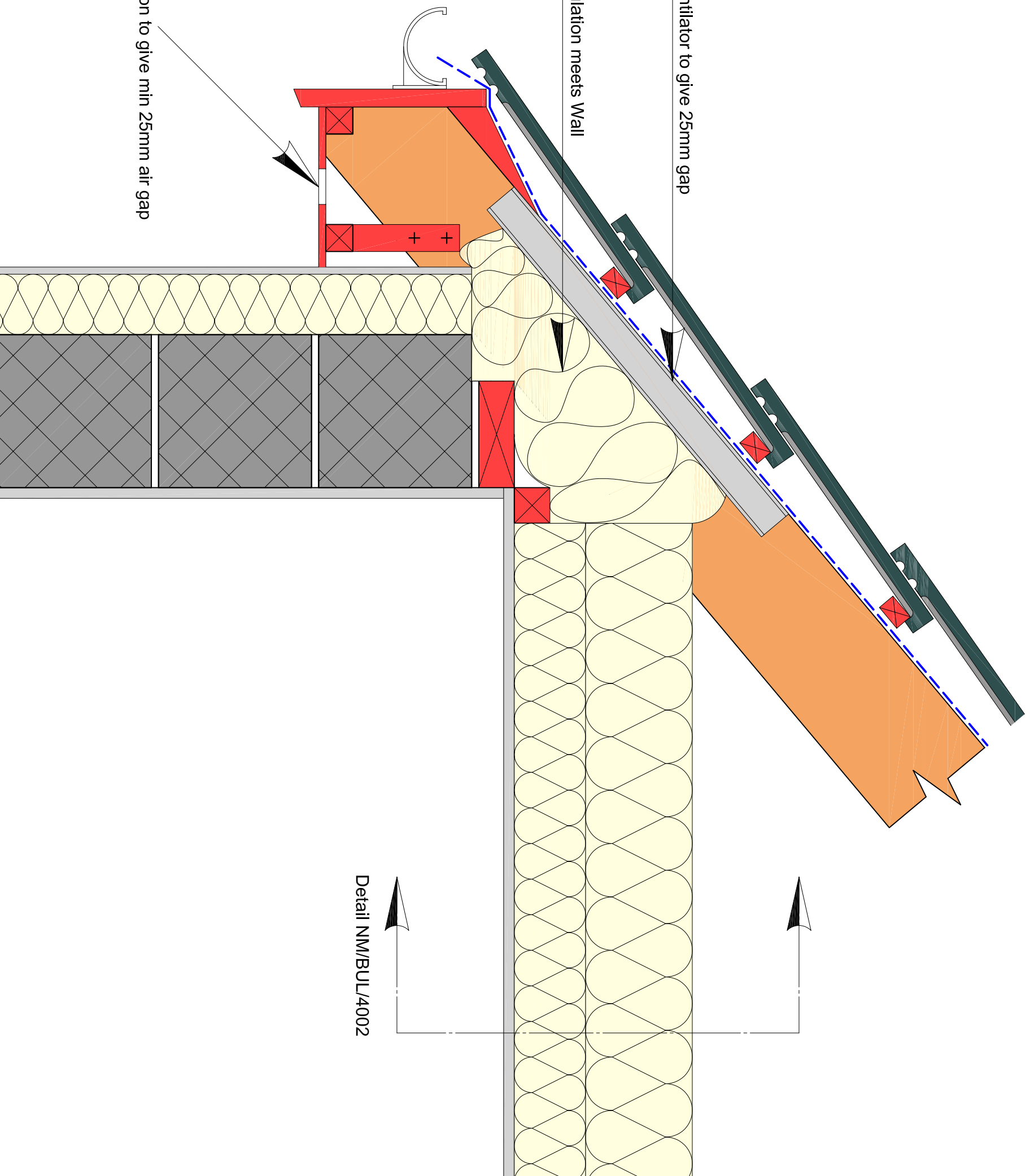


Notes:

Ensure Loft Insulation meets Wall
Insulation

Cross Flow Ventilator to give 25mm gap

Soffit Ventilation to give min 25mm air gap



Detail NM/BUL/4002

Drawing Title:
ROOF DETAILS.
(Pitched Roof - Ventilated Loft - Eaves)

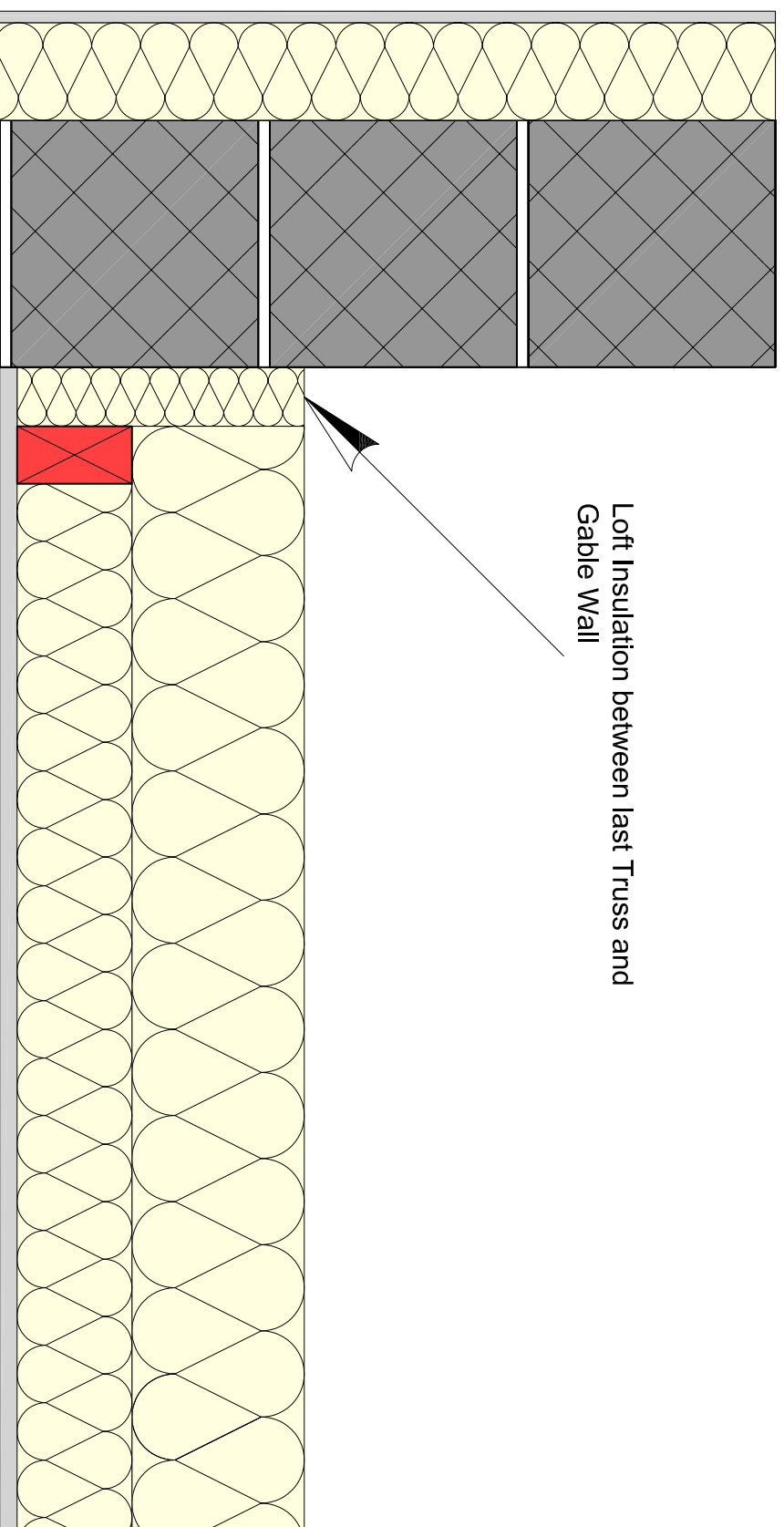
Revisions:
P1 Preliminary Issue - 19 August 2006
C1 Construction Issue - Jan 2007



Project:
Bulgaria

Drawn By: Nigel Morrison	
Scale: NTS	Date: Jan 2007
Drawing No: NM/BUL/4001	Revision: C1

Notes:



Detail to be read with Drawing NM/BUL/4001

Drawing Title:
ROOF DETAILS.
(Pitched Roof - Ventilated Loft - Gable)

Revisions:
P1 Preliminary Issue - 7 Oct 2006
C1 Construction Issue - Jan 2007



Project:
Bulgaria

Drawn By:
Nigel Morrison

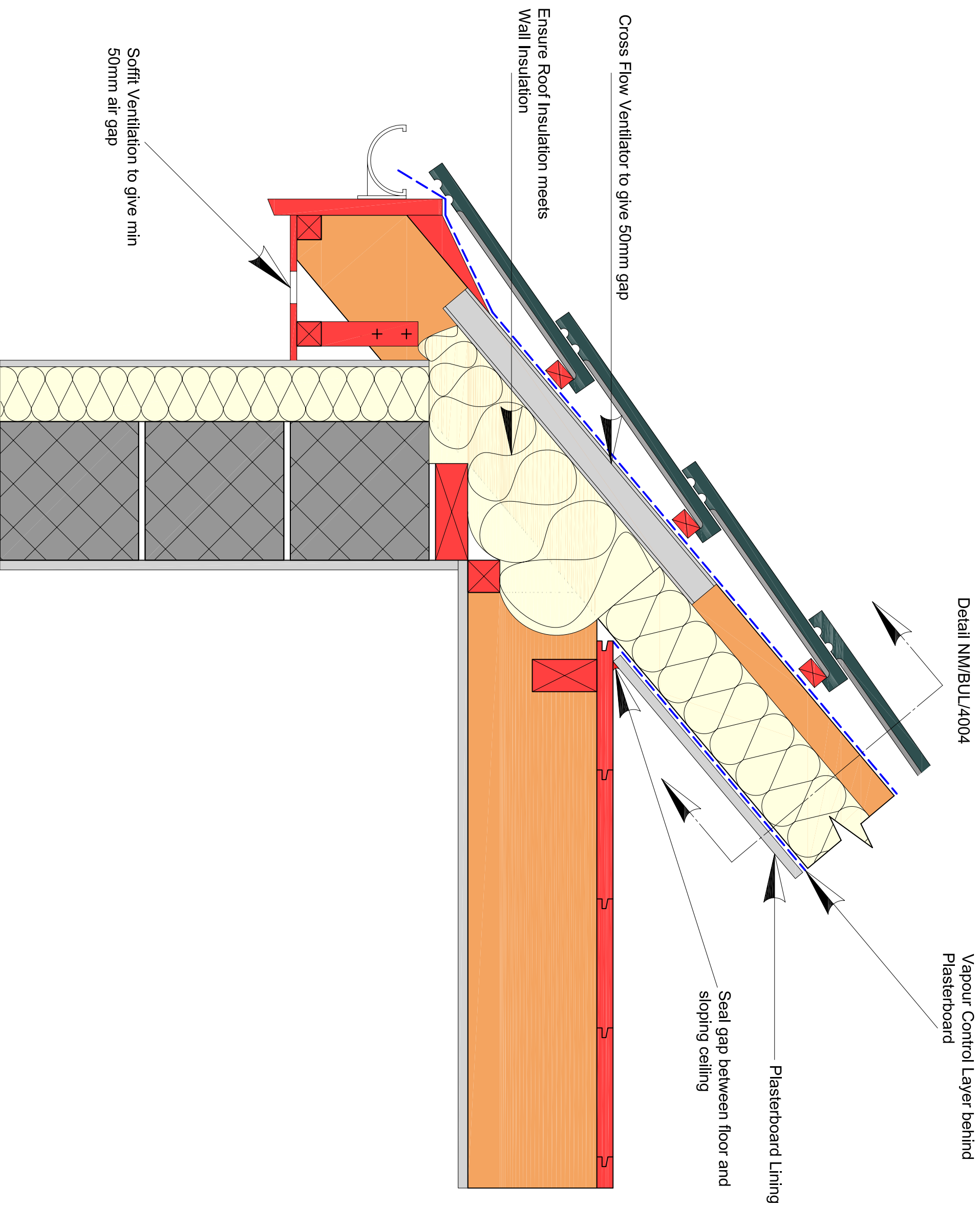
Scale:
NTS

Date:
Jan 2007

Drawing No:
NM/BUL/4002

Revision:
C1

Notes:



Notes:

Drawing Title:
ROOF DETAILS.
(Pitched Roof - Ventilated Rafter Void - Eaves)

Revisions:
P1 Preliminary Issue - 7 Oct 2006
C1 Construction Issue - Jan 2007



Project:
Bulgaria

Drawn By:
Nigel Morrison

Scale:
NTS

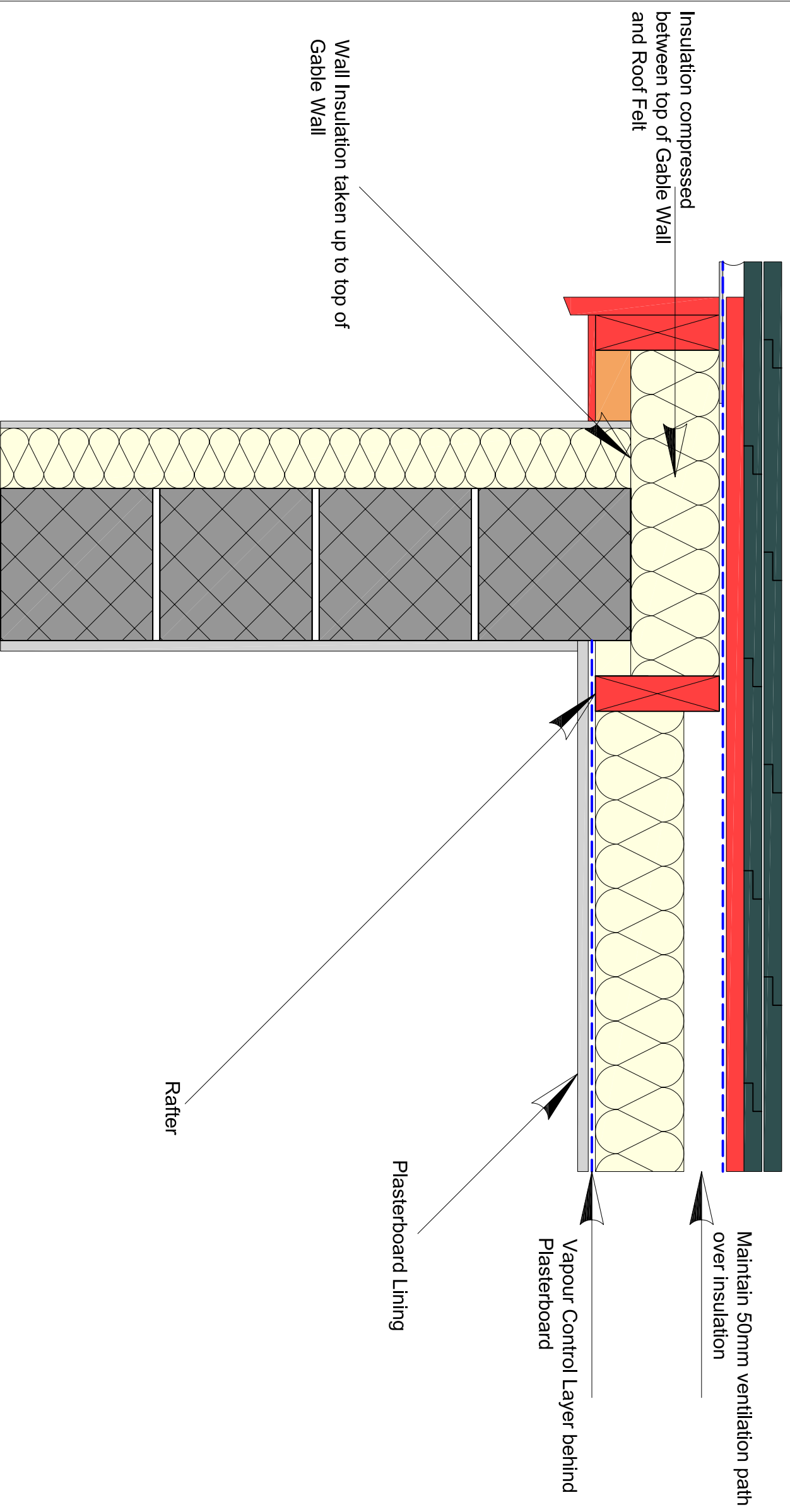
Date:
Jan 2007

Drawing No:
NM/BUL/4003

Revision:

C1

Notes:



Detail to be read with Drawing NM/BUL/4003

Notes:

Drawing Title:
ROOF DETAILS.
(Pitched Roof - Ventilated Rafter Void - Gable)

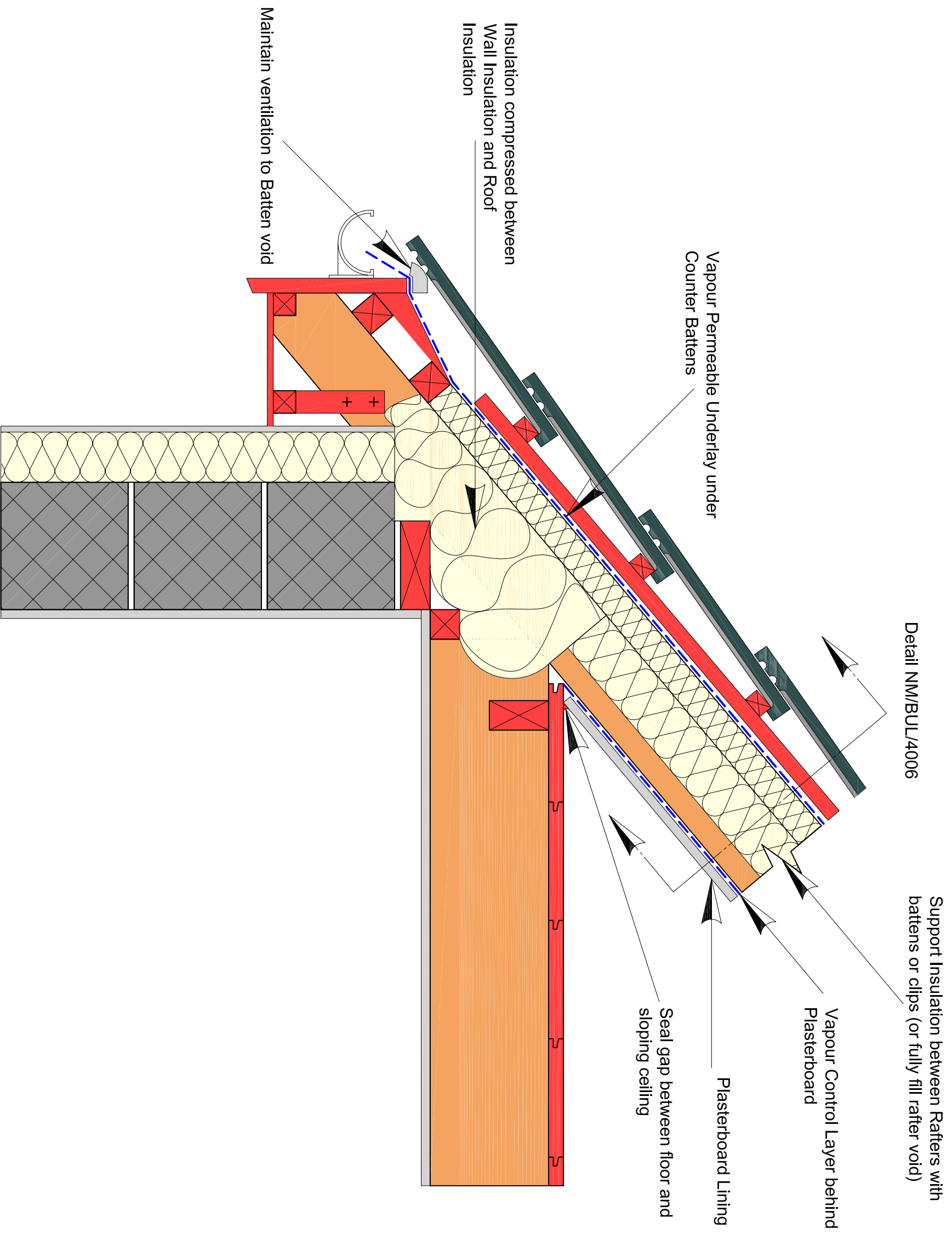
Revisions:
P1 Preliminary Issue - 8 Oct 2006
C1 Construction Issue - Jan 2007



Project:
Bulgaria

Drawn By: Nigel Morrison	
Scale: NTS	Date: Jan 2007
Drawing No: NM/BUL/4004	Revision: C1

Notes:



Drawing Title:
ROOF DETAILS.
(Pitched Roof - Ventilated Batten Void - Warm Roof - Eaves)

Revisions:
P1 Preliminary Issue - 8 Oct 2006
C1 Construction Issue - Jan 2007



Project:
Bulgaria

Drawn By:
Nigel Morrison

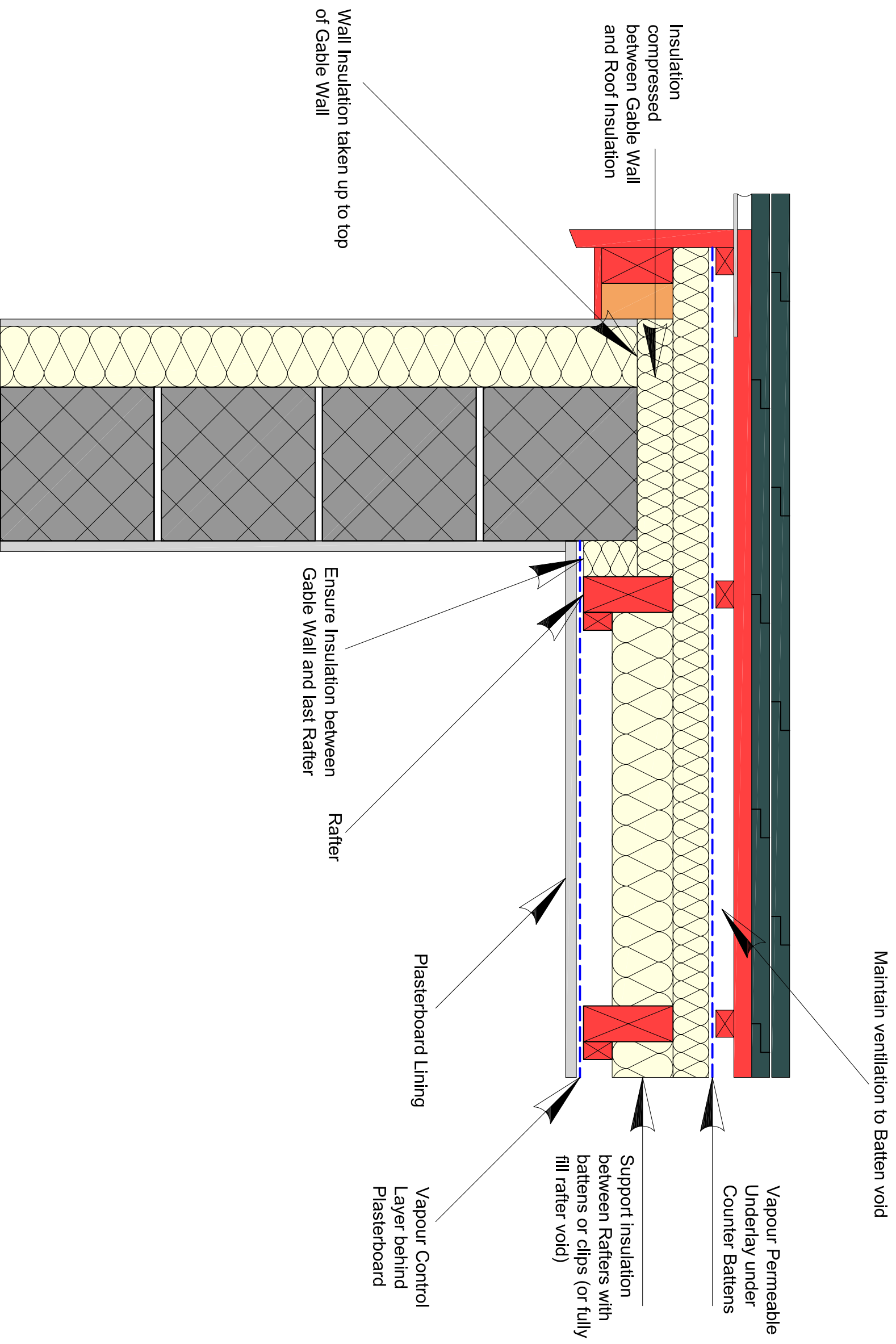
Scale:
NTS

Date:
Jan 2007

Drawing No:
NM/BUL/4005

Revision:
C1

Notes:



Detail to be read with Drawing NM/BUL/4005

Notes:

Drawing Title:
ROOF DETAILS.
(Pitched Roof - Ventilated Batten Void - Warm Roof - Gable)

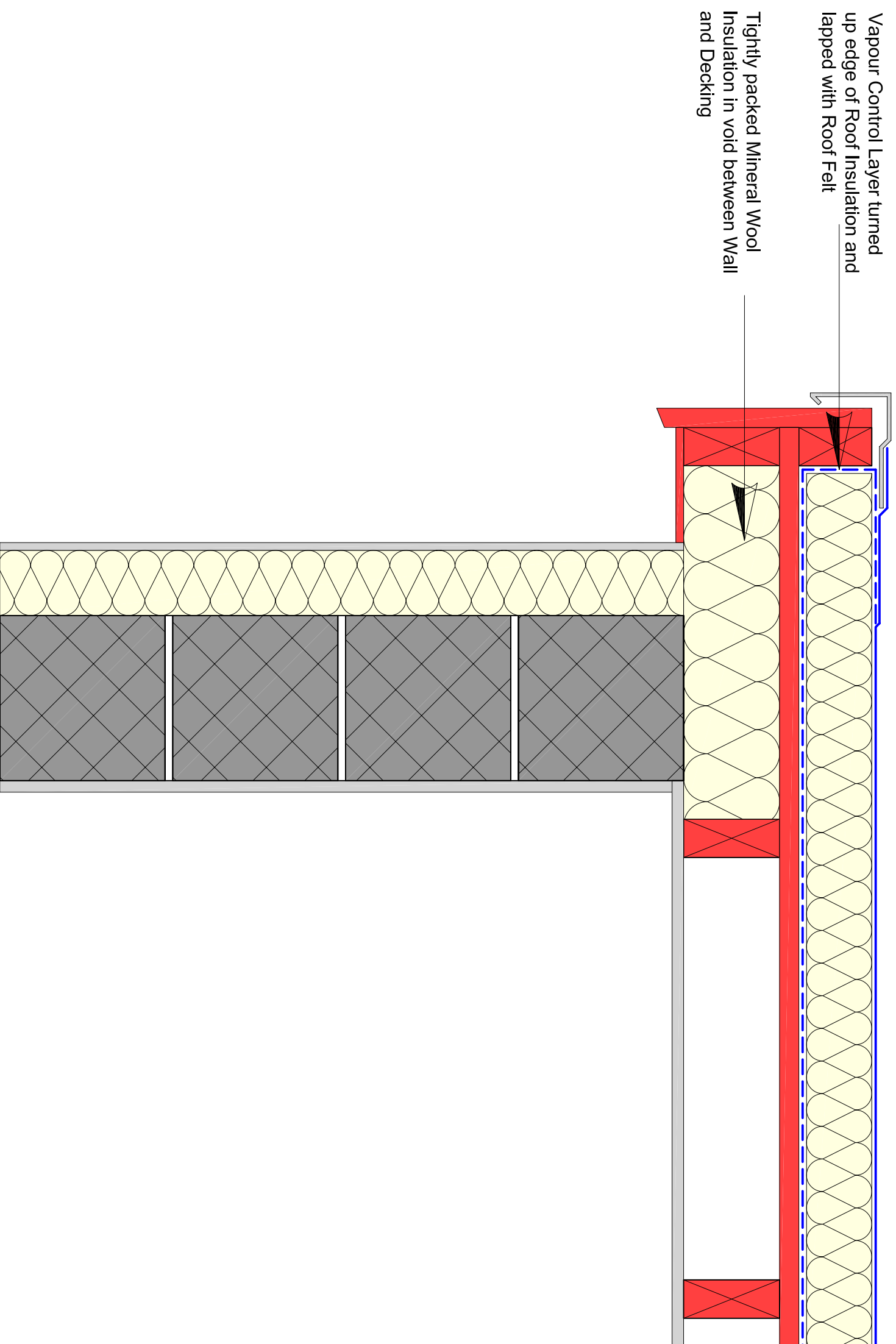
Revisions:
P1 Preliminary Issue - 8 Oct 2006
C1 Construction Issue - Jan 2007



Project:
Bulgaria

Drawn By: Nigel Morrison	
Scale: NTS	Date: Jan 2007
Drawing No: NM/BUL/4006	Revision: C1

Notes:



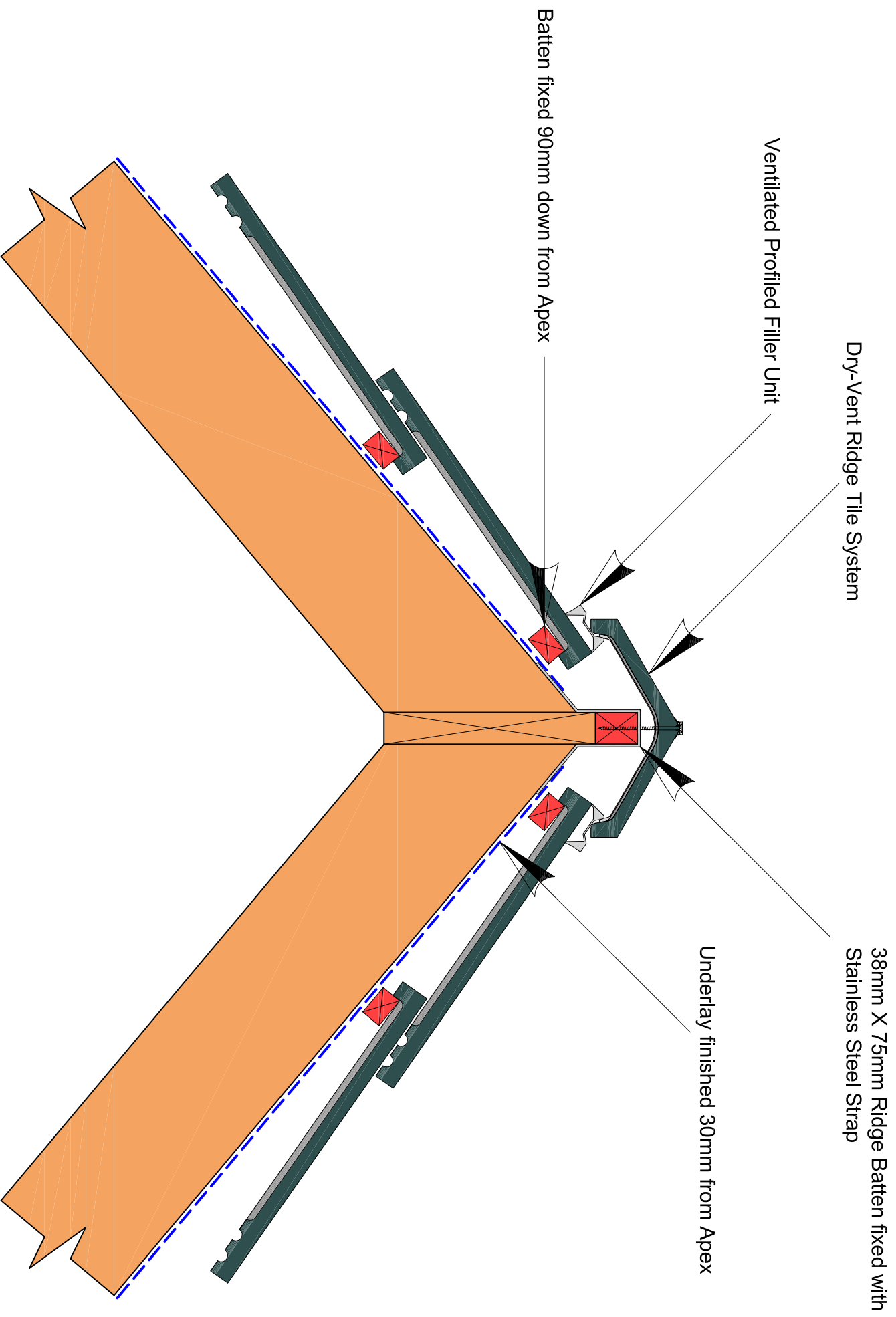
Drawing Title:
ROOF DETAILS.
(Timber Flat Roof)

Revisions:
P1 Preliminary Issue - 25 Oct 2006
C1 Construction Issue - Jan 2007



Project:
Bulgaria

Drawn By: Nigel Morrison	
Scale: NTS	Date: Jan 2007
Drawing No: NM/BUL/4007	Revision: C1



Notes:
 Dry Vent Ridge System Comprising:
 Stainless Steel Strap to secure Ridge Batten to roof rafters with Stainless Steel shank nails.
 Ridge Batten to comprise 38x75mm timber or be made of 3 No 38x25 battens nailed together.
 Stainless Steel wood screw with neoprene washer and clamping plate to secure Ridge Tile to Ridge Batten.
 Polypropylene Ridge to Ridge seals.
 Top tile batten to be fixed 90mm down from apex.
 Underlay to finish 30mm down from apex for air flow.

Drawing Title:
ROOF DETAILS.
 (Pitched Roof - Ventilated Loft - Ridge)

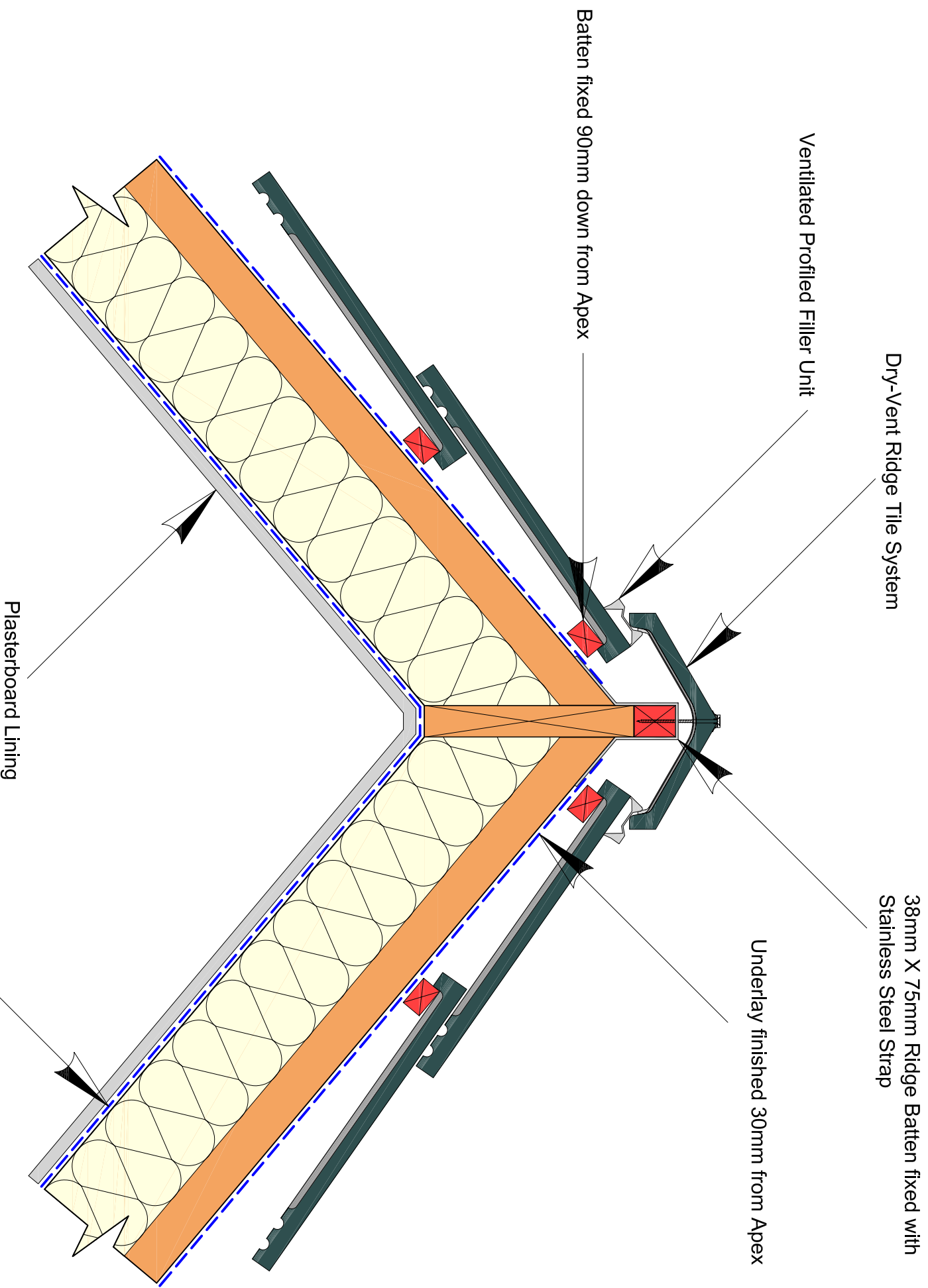
Revisions:
 P1 Preliminary Issue - 4 Nov 2006
 C1 Construction Issue - Jan 2007



Project:
Bulgaria

Drawn By: Nigel Morrison	
Scale: NTS	Date: Jan 2007
Drawing No: NM/BUL/4008	Revision: C1

To be read with Drawing NM-BUL-4001



Notes:
 Dry Vent Ridge System Comprising:
 Stainless Steel Strap to secure Ridge Batten to roof rafters with Stainless Steel shank nails.
 Ridge Batten to comprise 38x75mm timber or be made of 3 No 38x25 battens nailed together.
 Stainless Steel wood screw with neoprene washer and clamping plate to secure Ridge Tile to Ridge Batten.
 Polypropylene Ridge to Ridge seals.
 Top tile batten to be fixed 90mm down from apex.
 Underlay to finish 30mm down from apex for air flow.

Drawing Title:
ROOF DETAILS.
 (Pitched Roof - Ventilated Rafter Void - Ridge)

Revisions:
 P1 Preliminary Issue - 4 Nov 2006
 C1 Construction Issue - Jan 2007



Project:
Bulgaria

Drawn By:
 Nigel Morrison

Scale:
 NTS

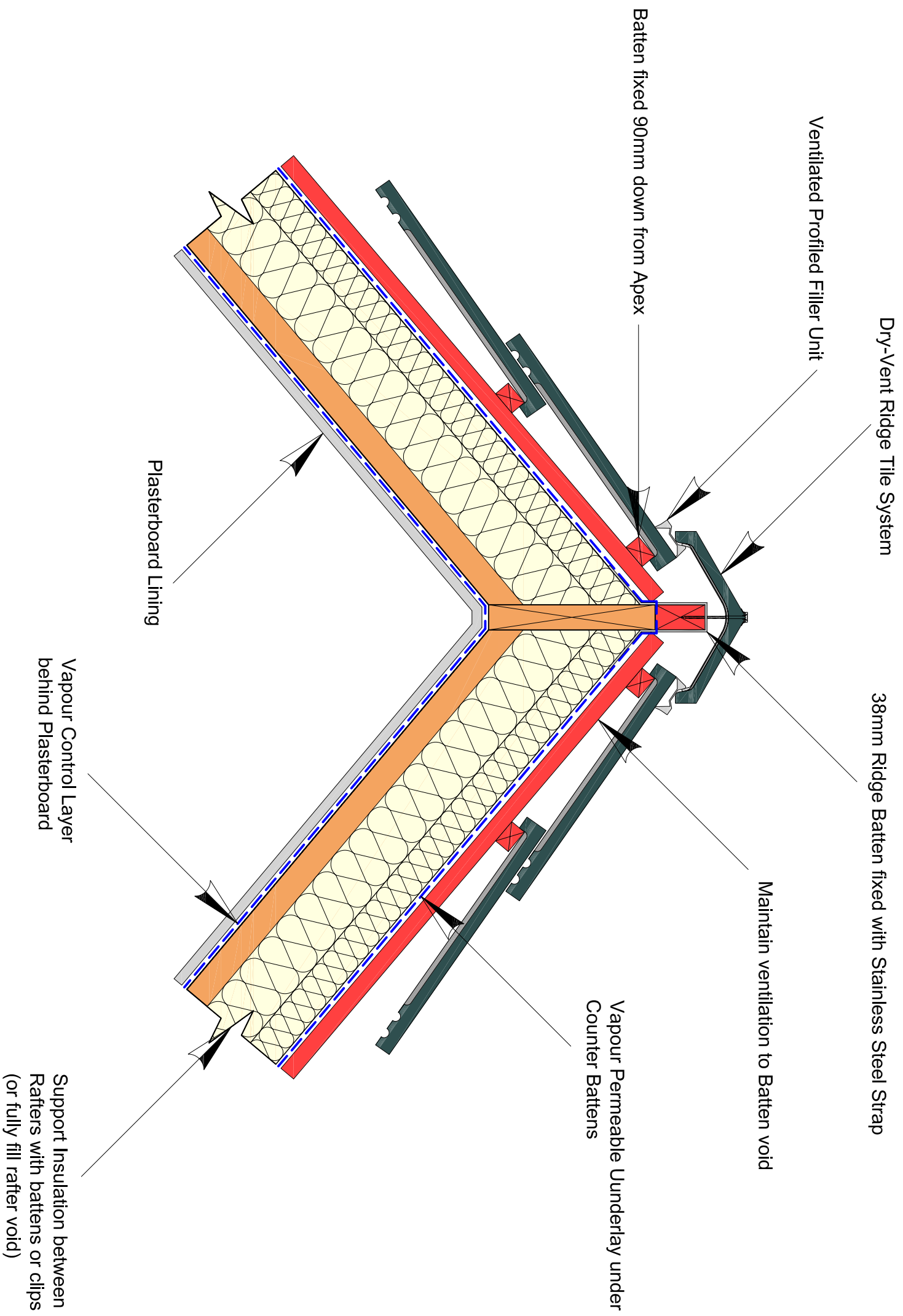
Drawing No:
 NM/BUL/4009

Date:
 Jan 2007

Revision:
C1

To be read with Drawing NM/BUL/4003

Notes:
 Dry Vent Ridge System Comprising:
 Stainless Steel Strap to secure Ridge Batten to roof rafters with Stainless Steel shank nails.
 Ridge Batten to comprise 38mm timber of suitable depth to allow for counter battens, or be made of 3-4 No 38x25 battens nailed together.
 Stainless Steel wood screw with neoprene washer and clamping plate to secure Ridge Tile to Ridge Batten.
 Polypropylene Ridge to Ridge seals.
 Top tile batten to be fixed 90mm down from apex.
 Underlay to finish 30mm down from apex for air flow.



To be read with Drawing NM-BUL-4005

Drawing Title:
ROOF DETAILS.
 (Pitched Roof - Ventilated Batten Void - Warm Roof - Ridge)

Revisions:
 P1 Preliminary Issue - 4 Nov 2006
 C1 Construction Issue - Jan 2007



Project:
Bulgaria

Drawn By: Nigel Morrison	
Scale: NTS	Date: Jan 2007
Drawing No: NM/BUL/4010	Revision: C1